



BONNELL
TWO STORY COTTAGE

L O R A L O M A



LORALOMA COTTAGES

BONNELL
3 BEDROOM, 3.5 BATHROOM
TWO STORY

Located in the social heart of Loraloma, perched between Limestone Gulch and Stargazing Circle, you will be inspired to live beyond the walls of your home with a plethora of club amenities just beyond your backyard. Whether you're seeking a Sunday home or a year-round residence, the Cottage brings nature to the forefront with protected views of Limestone Gulch and a home discreetly integrated into the natural topography of the land. Thoughtfully placed windows allow natural light to pour in while offering unique views from each area of the home, keeping you connected to nature even while relaxing indoors. Spend your evenings watching the sun go down from the comfort of the cocktail pool or bring your morning coffee on the trail just outside your front door to all that Loraloma has to discover.

The Hilltop Cottages are within the closest proximity to Limestone Gulch.



Bonnell Cottage walkout version pictured above to show general design intent for Cottage Homes.



ARETÉ collective



Floor plans are intended to give a general indication of the proposed layout only. Images and dimensions are not intended to form part of any contract or warranty.



LORALOMA COTTAGES

BONNELL
3 BEDROOM, 3.5 BATHROOM
TWO STORY

KEY FEATURES

- COTTAGE ENCLAVE OF TIMELESS-STYLE HOMES
- SPACIOUS ENTERTAINMENT AREAS CONNECTED TO OUTDOOR LIVING
- ADAPTIVE FLEX SPACES
- WET BAR WITHIN DINING SPACE
- DEDICATED LAUNDRY ROOM
- FLEX ROOM (OFFICE, BEDROOM)
- EXPANSIVE STORAGE
- 2 CAR GARAGE
- OPTIONAL COCKTAIL POOL WITH LOUNGE SEATING



Bonnell Cottage pictured above to show general design intent for Cottage Homes.



ARETÉ *collective*



Floor plans are intended to give a general indication of the proposed layout only. Images and dimensions are not intended to form part of any contract or warranty.



LORALOMA

THOMAS RANCH

HILLTOP COTTAGE SITE PLAN

These spacious luxury homes are integrated into the stunning landscape of the Texas hill country. Each home is thoughtfully sited on a generous lot, influenced by the undulating terrain and open spaces tied into the vast trail system. The design will focus on the natural beauty of the site and take advantage of 4-season living by incorporating infor/outdoor living.

KEY FEATURES

- ENTRY COURT
- DOOR - TO - TRAIL ACCESS
- NATURAL TERRACING TO ENHANCE VIEWS
- INDOOR / OUTDOOR LIVING PATIOS



KEY MAP LEGEND

- 01 HILLTOP COTTAGE SITE
- 02 STARGAZER PARK
- 03 LIMESTONE GULCH



ARETE collective



IMI WORLDWIDE PROPERTIES

Floor plans are intended to give a general indication of the proposed layout only. Images and dimensions are not intended to form part of any contract or warranty.

SITE PLAN



LORALOMA

BONNELL
3 BEDROOM, 3.5 BATHROOM
TWO STORY

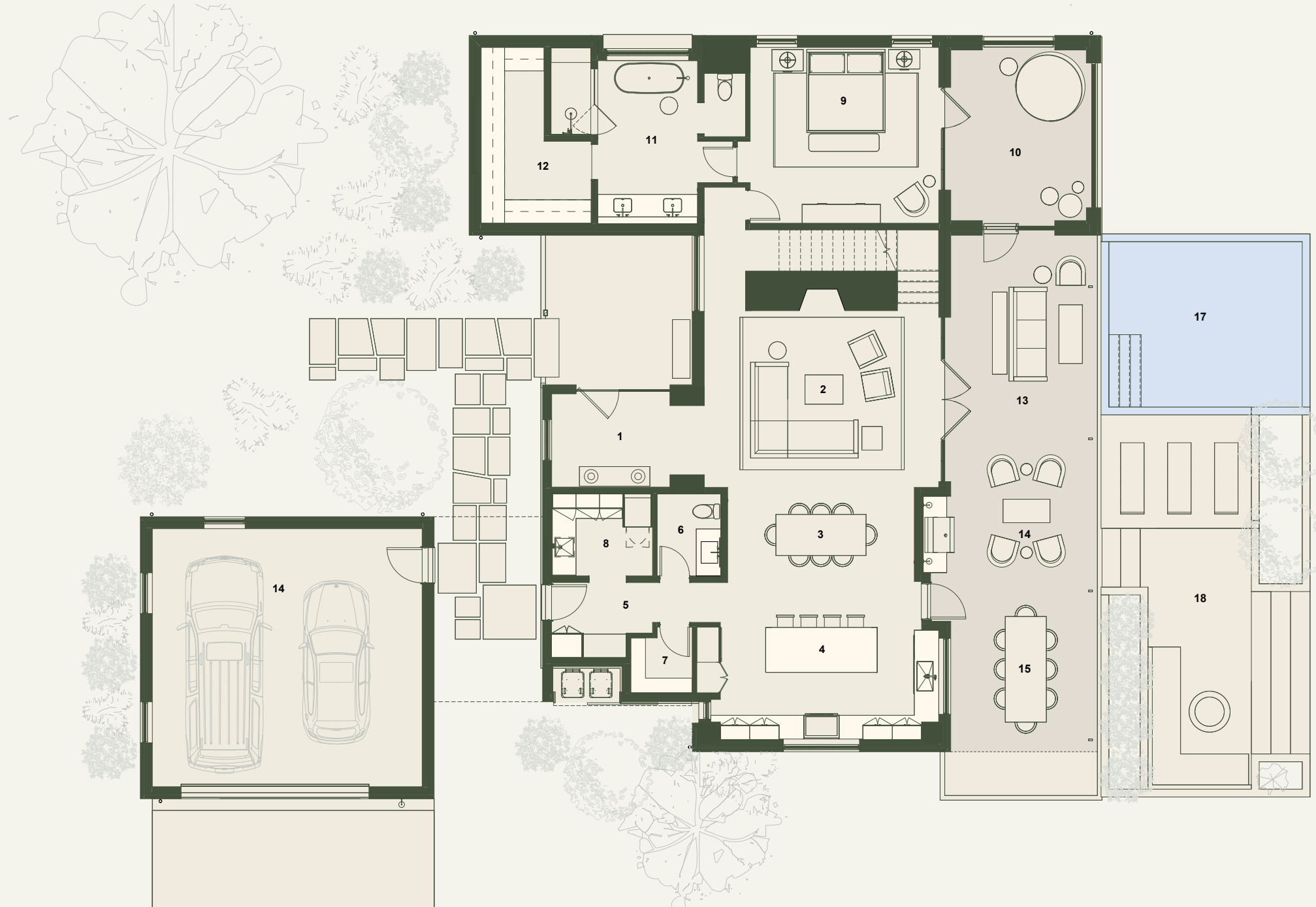
MAIN FLOOR PLAN

HOME FEATURES

- COTTAGE ENCLAVE OF TIMELESS-STYLE HOMES
- SPACIOUS ENTERTAINMENT AREAS CONNECTED TO OUTDOOR LIVING
- ADAPTIVE FLEX SPACES
- WET BAR WITHIN DINING SPACE
- DEDICATED LAUNDRY ROOM
- FLEX ROOM (OFFICE, BEDROOM)
- EXPANSIVE STORAGE
- 2 CAR GARAGE
- OPTIONAL COCKTAIL POOL WITH LOUNGE SEATING

AREA BREAKDOWN

UPPER LEVEL	930 ft ²
MAIN LEVEL	1,953 ft ²
TOTAL CONDITIONED AREA	2,882 ft²
GARAGE & MECHANICAL	629 ft ²
COVERED TERRACES	823 ft ²
TOTAL UNCONDITIONED AREA	1,452 ft²

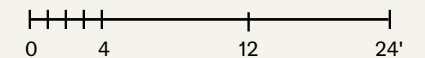


LEGEND

- 01 ENTRY
- 02 LIVING
20' 0" x 15' 0"
- 03 DINING
8' 0" x 15' 10"
- 04 KITCHEN
13' 7" x 17' 2"
- 05 MUD ROOM
6' 4" x 6' 4"
- 06 POWDER ROOM
- 07 PANTRY
- 08 LAUNDRY
8' 7" x 7' 0"
- 09 PRIMARY BEDROOM
16' 0" x 15' 0"
- 10 SCREENED DECK
- 11 PRIMARY BATHROOM
8' 6" x 13' 10"
- 12 PRIMARY CLOSET
9' 6" x 15' 0"
- 13 OUTDOOR LIVING
- 14 BBQ
- 15 OUTDOOR DINING
- 16 GARAGE
- 17 POOL - OPTIONAL
- 18 COCKTAIL TERRACE

MAIN FLOOR PLAN

Floor plans are intended to give a general indication of the proposed layout only. Images and dimensions are not intended to form part of any contract or warranty.





LORALOMA

BONNELL
3 BEDROOM, 3.5 BATHROOM
TWO STORY

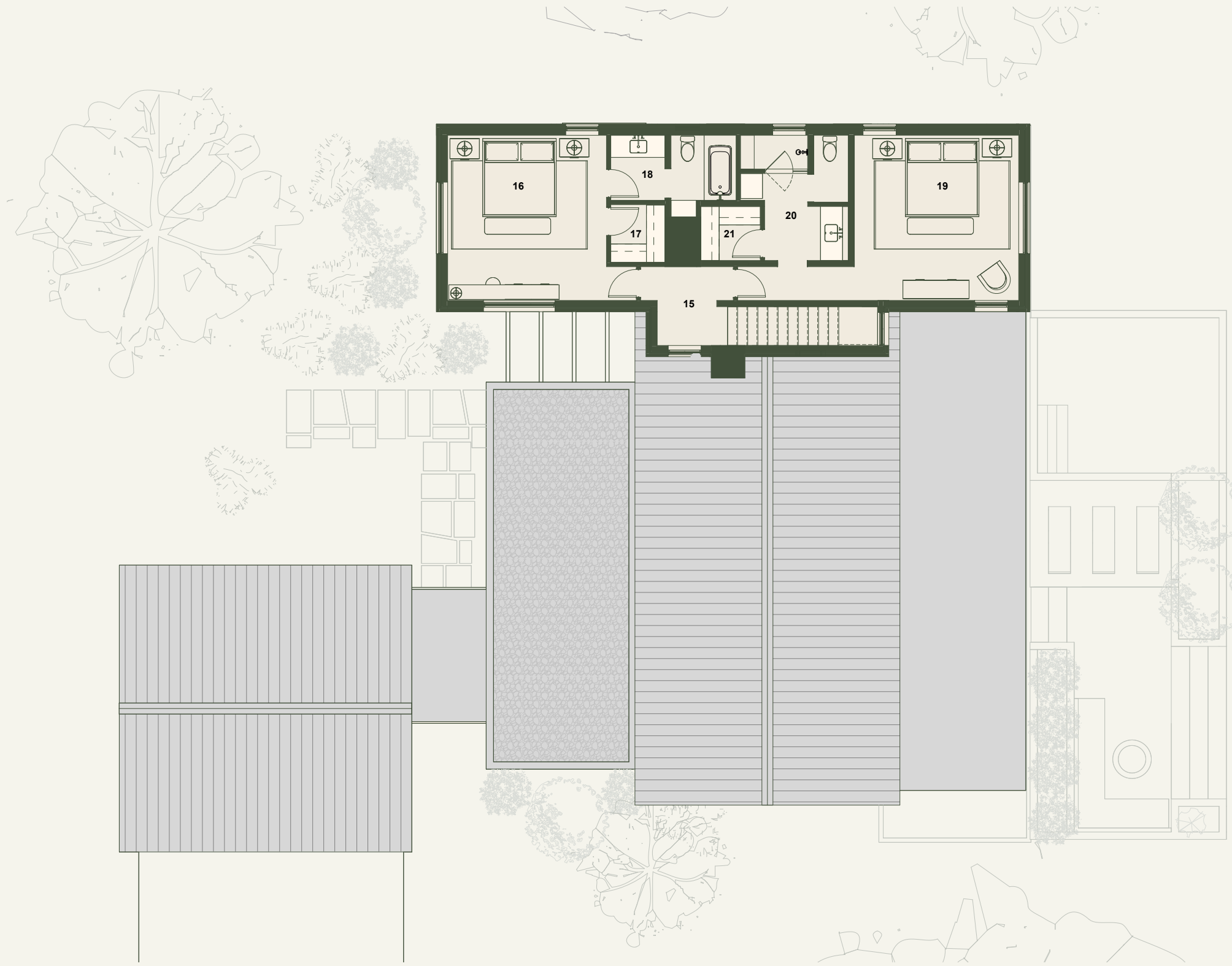
UPPER LEVEL FLOOR PLAN

HOME FEATURES

- COTTAGE ENCLAVE OF TIMELESS-STYLE HOMES
- SPACIOUS ENTERTAINMENT AREAS CONNECTED TO OUTDOOR LIVING
- ADAPTIVE FLEX SPACES
- WET BAR WITHIN DINING SPACE
- DEDICATED LAUNDRY ROOM
- FLEX ROOM (OFFICE, BEDROOM)
- EXPANSIVE STORAGE
- 2 CAR GARAGE
- OPTIONAL COCKTAIL POOL WITH LOUNGE SEATING

AREA BREAKDOWN

UPPER LEVEL	930 ft ²
MAIN LEVEL	1,953 ft ²
TOTAL CONDITIONED AREA	2,882 ft²
GARAGE & MECHANICAL	629 ft ²
COVERED TERRACES	823 ft ²
TOTAL UNCONDITIONED AREA	1,452 ft²

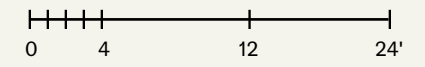


LEGEND

- 19 STAIR
- 20 BEDROOM
14' 5" x 15' 0"
- 21 WALK-IN CLOSET
- 22 BATHROOM
- 23 BEDROOM
15' 0" x 15' 0"
- 24 BATHROOM
- 25 WALK-IN CLOSET

UPPER LEVEL FLOOR PLAN

Floor plans are intended to give a general indication of the proposed layout only. Images and dimensions are not intended to form part of any contract or warranty.



TWO STORY COTTAGE

CONCEPTUAL PERSPECTIVE- FRONT VIEW



TWO STORY COTTAGE

CONCEPTUAL PERSPECTIVE - REAR VIEW





BONNELL
WALKOUT COTTAGE

L O R A L O M A



LORALOMA COTTAGES

BONNELL
3 BEDROOM, 4.5 BATHROOM
WALKOUT

Located in the social heart of Loraloma, perched between Limestone Gulch and Stargazing Circle, you will be inspired to live beyond the walls of your home with a plethora of club amenities just beyond your backyard. Whether you're seeking a Sunday home or a year-round residence, the Cottage brings nature to the forefront with protected views of Limestone Gulch and a home discreetly integrated into the natural topography of the land. Thoughtfully placed windows allow natural light to pour in while offering unique views from each area of the home, keeping you connected to nature even while relaxing indoors. Spend your evenings watching the sun go down from the comfort of the cocktail pool or bring your morning coffee on the trail just outside your front door to all that Loraloma has to discover.

The Hilltop Cottages are within the closest proximity to Limestone Gulch.



Bonnell Cottage pictured above to show general design intent for Cottage Homes. Shown with stone exterior as upgrade.



ARETÉ collective



Floor plans are intended to give a general indication of the proposed layout only. Images and dimensions are not intended to form part of any contract or warranty.



LORALOMA COTTAGES

BONNELL
3 BEDROOM, 4.5 BATHROOM
WALKOUT

KEY FEATURES

- COTTAGE ENCLAVE OF TIMELESS-STYLE HOMES
- SPACIOUS ENTERTAINMENT AREAS CONNECTED TO OUTDOOR LIVING
- ADAPTIVE FLEX SPACES
- WET BAR WITHIN DINING SPACE
- DEDICATED LAUNDRY ROOM
- FLEX ROOM (OFFICE, BEDROOM)
- EXPANSIVE STORAGE
- 2 CAR GARAGE
- OPTIONAL COCKTAIL POOL WITH LOUNGE SEATING



Bonnell Cottage pictured above to show general design intent for Cottage Homes.



ARETÉ *collective*



Floor plans are intended to give a general indication of the proposed layout only. Images and dimensions are not intended to form part of any contract or warranty.



LORALOMA

THOMAS RANCH

HILLTOP COTTAGE SITE PLAN

These spacious luxury homes are integrated into the stunning landscape of the Texas hill country. Each home is thoughtfully sited on a generous lot, influenced by the undulating terrain and open spaces tied into the vast trail system. The design will focus on the natural beauty of the site and take advantage of 4-season living by incorporating infor/outdoor living.

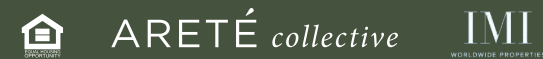
KEY FEATURES

- ENTRY COURT
- DOOR - TO - TRAIL ACCESS
- NATURAL TERRACING TO ENHANCE VIEWS
- INDOOR / OUTDOOR LIVING PATIOS



KEY MAP LEGEND

- 01 HILLTOP COTTAGE SITE
- 02 STARGAZER PARK
- 03 LIMESTONE GULCH



Floor plans are intended to give a general indication of the proposed layout only. Images and dimensions are not intended to form part of any contract or warranty.

SITE PLAN

LORALOMA COTTAGES

BONNELL
3 BEDROOM, 4.5 BATHROOM
WALKOUT

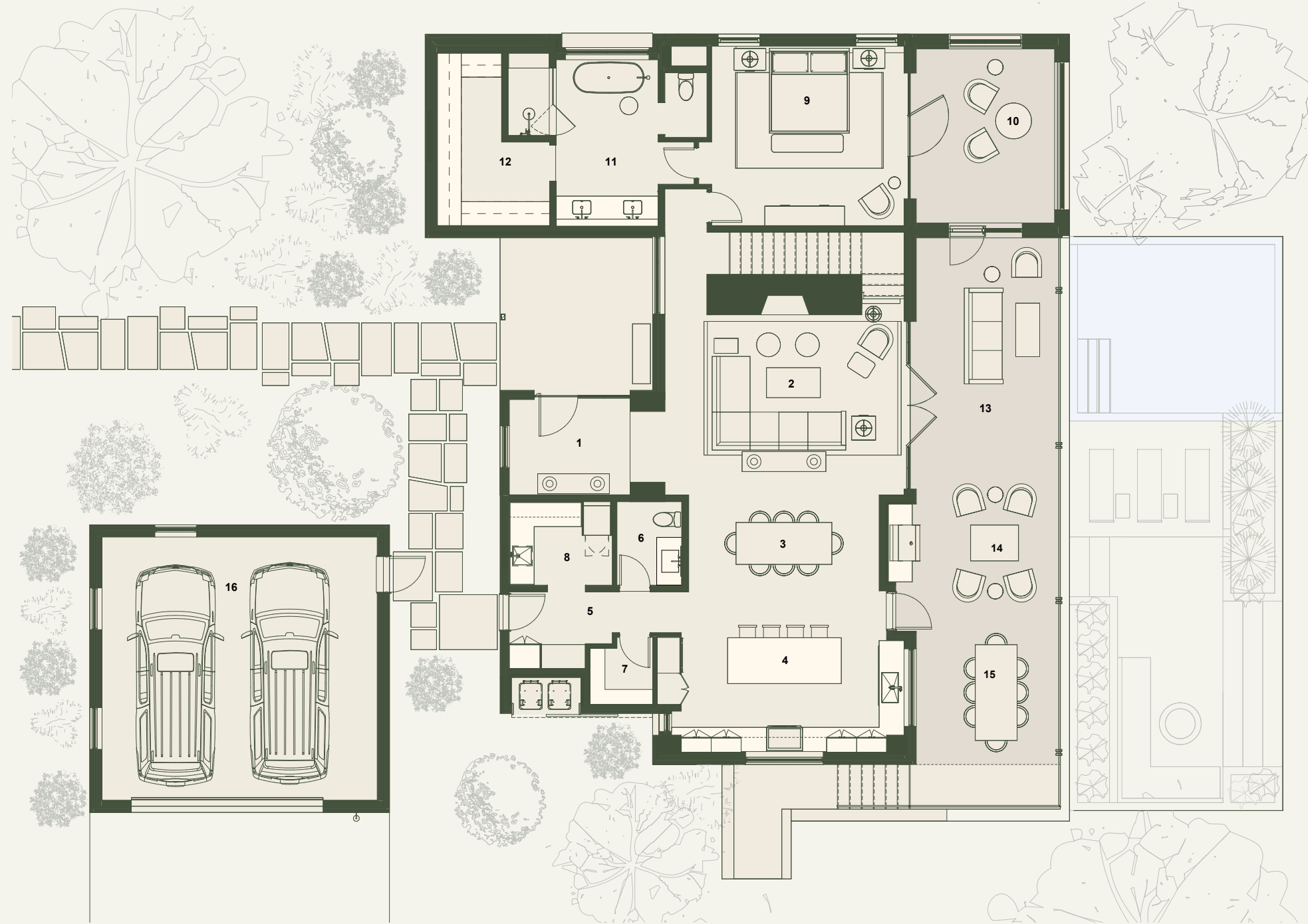
MAIN FLOOR PLAN

HOME FEATURES

- COTTAGE ENCLAVE OF TIMELESS-STYLE HOMES
- SPACIOUS ENTERTAINMENT AREAS CONNECTED TO OUTDOOR LIVING
- ADAPTIVE FLEX SPACES
- DEDICATED LAUNDRY ROOM
- EXPANSIVE STORAGE
- 2 CAR GARAGE
- OPTIONAL COCKTAIL POOL WITH LOUNGE SEATING

AREA BREAKDOWN

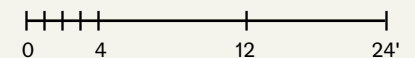
MAIN LEVEL	1,823 ft ²
LOWER LEVEL	1,204 ft ²
TOTAL CONDITIONED AREA	3,027 ft²
<hr/>	
GARAGE & MECHANICAL	706 ft ²
COVERED TERRACES	1,838 ft ²
TOTAL UNCONDITIONED AREA	2,544 ft²



LEGEND

- 01 ENTRY
- 02 LIVING
20' 0" x 15' 0"
- 03 DINING
8' 0" x 15' 10"
- 04 KITCHEN
13' 7" x 17' 2"
- 05 MUD ROOM
6' 4" x 6' 4"
- 06 POWDER ROOM
- 07 PANTRY
- 08 LAUNDRY
8' 7" x 7' 0"
- 09 PRIMARY BEDROOM
16' 0" x 15' 0"
- 10 SCREENED DECK
- 11 PRIMARY BATHROOM
8' 6" x 13' 10"
- 12 PRIMARY CLOSET
9' 6" x 15' 0"
- 13 OUTDOOR LIVING
- 14 BBQ
- 15 OUTDOOR DINING
- 16 GARAGE

MAIN FLOOR PLAN



Floor plans are intended to give a general indication of the proposed layout only. Images and dimensions are not intended to form part of any contract or warranty.



LORALOMA COTTAGES

BONNELL
3 BEDROOM, 4.5 BATHROOM
WALKOUT

LOWER LEVEL FLOOR PLAN

HOME FEATURES

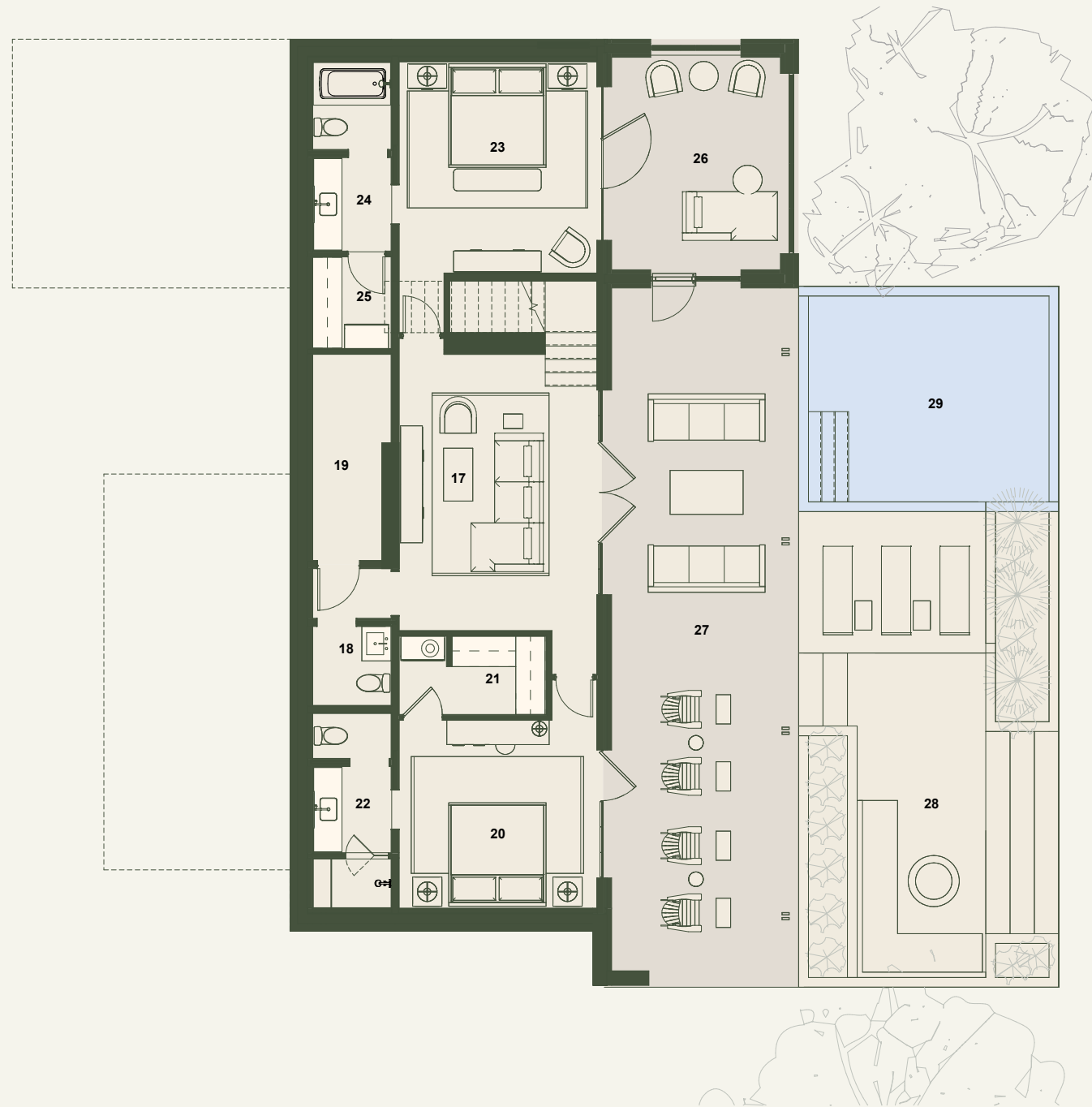
- COTTAGE ENCLAVE OF TIMELESS-STYLE HOMES
- SPACIOUS ENTERTAINMENT AREAS CONNECTED TO OUTDOOR LIVING
- ADAPTIVE FLEX SPACES
- DEDICATED LAUNDRY ROOM
- EXPANSIVE STORAGE
- 2 CAR GARAGE
- OPTIONAL COCKTAIL POOL WITH LOUNGE SEATING

AREA BREAKDOWN

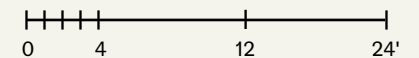
MAIN LEVEL	1,823 ft ²
LOWER LEVEL	1,204 ft ²
TOTAL CONDITIONED AREA	3,027 ft²
GARAGE & MECHANICAL	706 ft ²
COVERED TERRACES	1,838 ft ²
TOTAL UNCONDITIONED AREA	2,544 ft²

LEGEND

- 17 GAME ROOM
18'11" x 13'6"
- 18 POWDER ROOM
- 19 MECHANICAL
- 20 BEDROOM
13'6" x 12'11"
- 21 WALK-IN CLOSET
- 22 BATHROOM
- 23 BEDROOM
13'6" x 14'6"
- 24 BATHROOM
- 25 CLOSET
- 26 SCREENED PORCH
- 27 PATIO
- 28 COCKTAIL TERRACE
- 29 POOL - UPGRADE



LOWER LEVEL FLOOR PLAN



Floor plans are intended to give a general indication of the proposed layout only. Images and dimensions are not intended to form part of any contract or warranty.



ARETÉ collective



IMI
WORLDWIDE PROPERTIES

WALKOUT COTTAGE

REAR VIEW



Bonnell Cottage walkout version pictured above to show general design intent for Cottage Homes. Shown with stone exterior as upgrade.



ARETÉ *collective*



Floor plans are intended to give a general indication of the proposed layout only. Images and dimensions are not intended to form part of any contract or warranty.