




Limestone Gulch at Loraloma

Nowhere is the “best of Texas” represented more perfectly than in Limestone Gulch, a 50+ acre amenity-rich playground that combines Hill Country natural attractions and its cultural swagger in one of Loraloma’s most coveted communities.

- AMENITIES INCLUDE:
- FISHING POND
 - SWIMMING HOLE
 - WELLNESS CENTER
 - SPA
 - KID’S CLUB
 - THEATER
 - FAMILY POOL
 - CAFE
 - RECORDING STUDIO

- TAP HOUSE & DANCE HALL
 - AMPHITHEATER
 - BAR, LOUNGE & GRILL
 - COMMUNITY FARM
 - MEMBER’S LOUNGE
 - CURATED EVENTS & CLASSES
 - OPEN SPACE & TRAILS




L O R A L O M A
PRIVATE CLUB AND ESTATES

◆ ◆ ◆
LIMESTONE WALKOUT

3 Bedroom | 3 Bath | 1 Powder Room
2,975 Int SF | 1,764 Ext SF

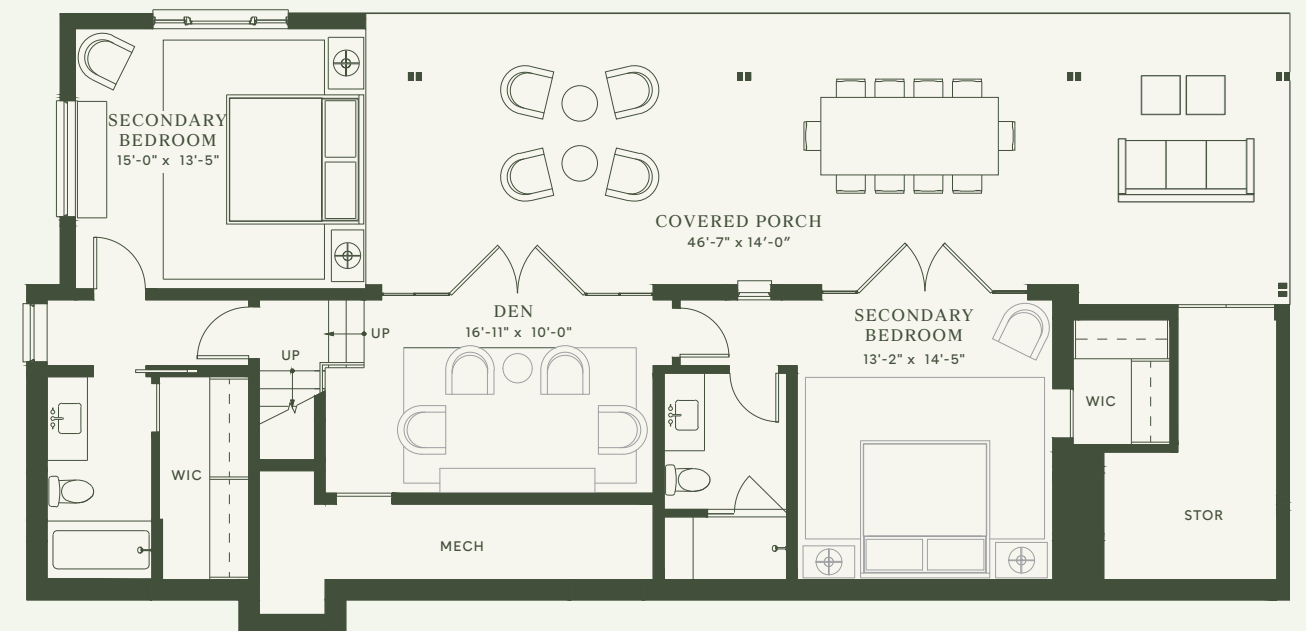
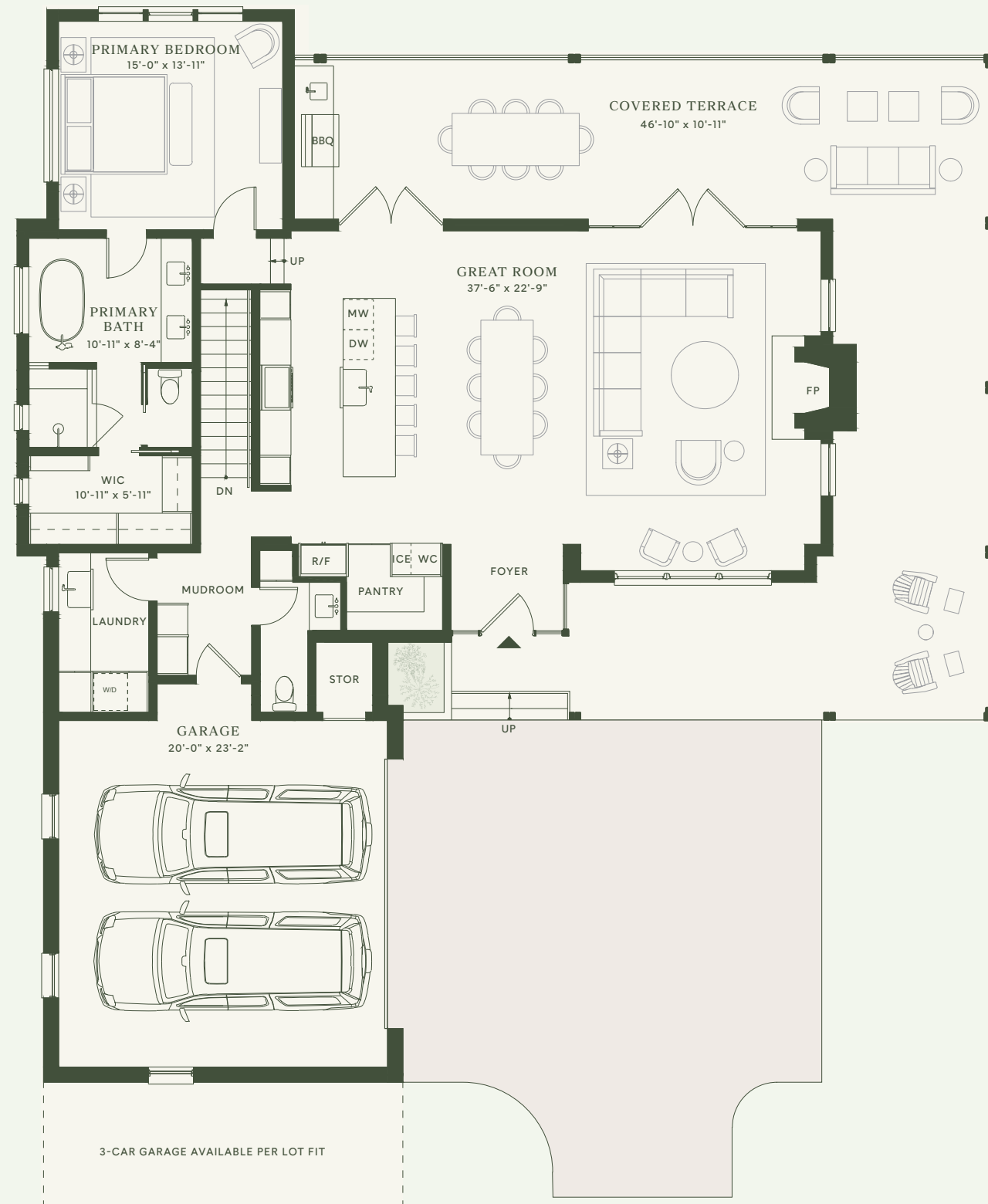


- Located at the heart of Loraloma, the Limestone Residences overlook Limestone Gulch.
- 37'+ Great Room with Wraparound Terrace
 - Connected Garage with Mudroom
 - Main Level Primary Bedroom
 - Walkout Level with Den and Two Bedrooms



LIMESTONE WALKOUT

3 Bedroom | 3 Bath | 1 Powder Room
2,975 Int SF | 1,764 Ext SF



MAIN LEVEL
1,699 INT SF | 1,087 EXT SF | 602 GARAGE SF

WALKOUT LEVEL
1,276 INT SF | 677 EXT SF

