



Amenities for Every Lifestyle

Curated by our team of experts, Loraloma’s amenities are in a league of their own. Spread throughout the community, thoughtful programming and services celebrate the natural landscape, connecting residents to the Hill Country in a brand new way.

AMENITIES INCLUDE:

- FISHING POND
- SWIMMING HOLE
- WELLNESS CENTER
- TAP HOUSE & DANCE HALL
- AMPHITHEATER
- BAR, LOUNGE & GRILL
- CURATED EVENTS & CLASSES
- OPEN SPACE & TRAILS
- POOL & SPA
- GOLF HOUSE AND MEMBERS LOUNGE
- 18-HOLE CHAMPIONSHIP GOLF COURSE
- CLUBHOUSE WITH RESTAURANT
- RIVERFRONT PARK AND BOARDWALK





L O R A L O M A

PRIVATE CLUB AND ESTATES

◆ ◆ ◆

MAYFIELD WALKOUT

6 Bedroom | 6 Bath | 2 Powder Rooms
7,589 Int SF | 1,077 Ext SF

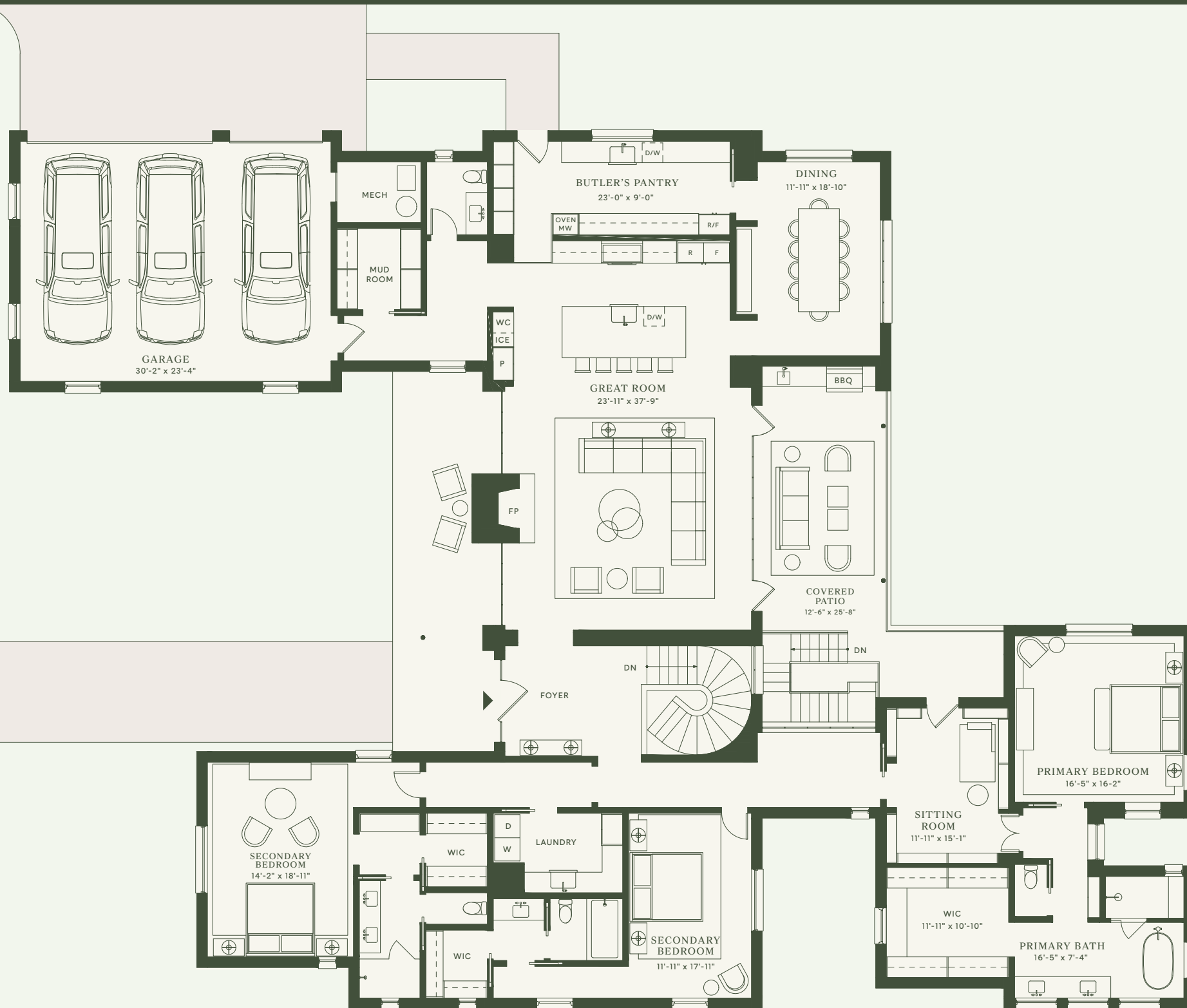


Great Room with Fireplace and Connected Patio
Separate Dining Area and Butler’s Pantry
Spiral Staircase Leading to Game Room
Primary Bedroom Suite with Sitting Room and Walk-in Closet



MAYFIELD WALKOUT

6 Bedroom | 6 Bath | 2 Powder Rooms
7,589 Int SF | 1,077 Ext SF



MAIN LEVEL
4,225 INT SF | 423 EXT SF | 829 GARAGE SF

WALKOUT LEVEL
3,364 INT SF | 654 EXT SF





Amenities for Every Lifestyle

Curated by our team of experts, Loraloma's amenities are in a league of their own. Spread throughout the community, thoughtful programming and services celebrate the natural landscape, connecting residents to the Hill Country in a brand new way.

AMENITIES INCLUDE:

- FISHING POND
- SWIMMING HOLE
- WELLNESS CENTER
- TAP HOUSE & DANCE HALL
- AMPHITHEATER
- BAR, LOUNGE & GRILL
- CURATED EVENTS & CLASSES
- OPEN SPACE & TRAILS
- POOL & SPA
- GOLF HOUSE AND MEMBERS LOUNGE
- 18-HOLE CHAMPIONSHIP GOLF COURSE
- CLUBHOUSE WITH RESTAURANT
- RIVERFRONT PARK AND BOARDWALK



[LORALOMACLUB.COM](https://loralomaclub.com)

SALES@LORALOMACLUB.COM | 512.262.4642
500 SOUTH PALEFACE RANCH ROAD, SPICEWOOD, TX 78669



LORALOMA

PRIVATE CLUB AND ESTATES



MAYFIELD 2-STORY

5 Bedroom | 5 Bath | 1 Powder Room
6,158 Int SF | 818 Ext SF



Great Room with Fireplace and Connected Patio
Separate Dining Area and Butler's Pantry
Primary Bedroom Suite with Sitting Room and Walk-in Closet
Second Story with Office Area, Kitchenette, and Den



MAYFIELD

2-STORY

5 Bedroom | 5 Bath | 1 Powder Room
6,158 Int SF | 818 Ext SF



MAIN LEVEL
4,336 INT SF | 818 EXT SF | 828 GARAGE SF

UPPER LEVEL
1,822 INT SF

